

MEET LIZZY

SHE IS GOING
TO SHOW YOU A
VERY SPECIAL
PLACE



Did you know?

STAMP
HERE

- ✓ Our school has a special place
- ✓ Our special place is an endangered ecosystem
- ✓ Our school can help protect & look after this special place



WHAT IS SO SPECIAL ABOUT THIS PLACE

Our school has an endangered ecological community on site.

That means that the plants, animals, sand and soil that grow here are protected by law. They are very unusual and special because less than 3% of this type of ecosystem remains.

Our special place is called **Eastern Suburbs Banksia Scrub**.

We need to protect this place because:

- It's the law (*TSC Act, 1995, NPWS Act, 1974, EPA Act 1979*)
- It provides a living link with Sydney's natural and historic past and heritage
- It is important country and culture to local aboriginal peoples (Dharawal)
- It provides habitat for plants and animals in the local area
- It is a learning asset for the students and teachers at Banksmeadow Public school

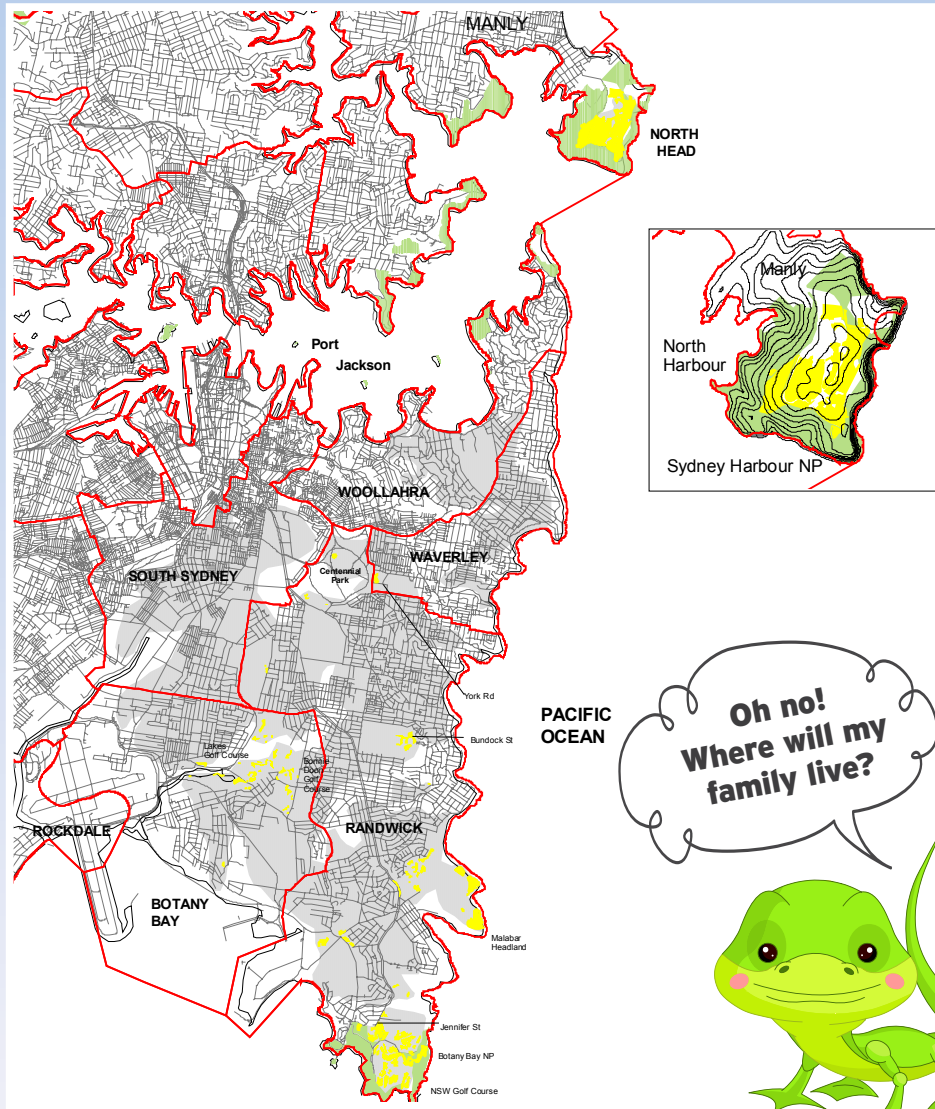
We need to protect all native Australian plants and animals from extinction. Once they are gone, they are gone forever and we may never know what important food, medicine or benefits they could provide to us and future generations.

Why is it special?

Banksmeadow Public School is one of the only places left in Sydney where this type of ecosystem occurs. Have a look at the map to see where where it has disappeared from (grey where it was and yellow where it is left now).

STAMP
HERE

Eastern Suburbs Banksia Scrub



WHY IS THIS ECOSYSTEM SO SPECIAL

The Eastern Suburbs Banksia Scrub formed here over 100 000 years ago. The sand has been blown by the wind from the coast, and over time seeds from plants blown by the wind and dropped by birds started to grow in the sand.

Banksias grow here but what else COULD live here?

What other plants or animals live here?

Activity
Circle if its an animal
or a plant!

green wattle - *Acacia Longifolia*



sword sedge - *Lepidosperma lateral*



new holland honeyeater -
Phylidonyris novaehollandiae



striped skink *Ctenotus taeniolatus*



native bee *Tetragonula carbonaria*



grass tree - *Xanthorrhoea esculentum*



How can you help?

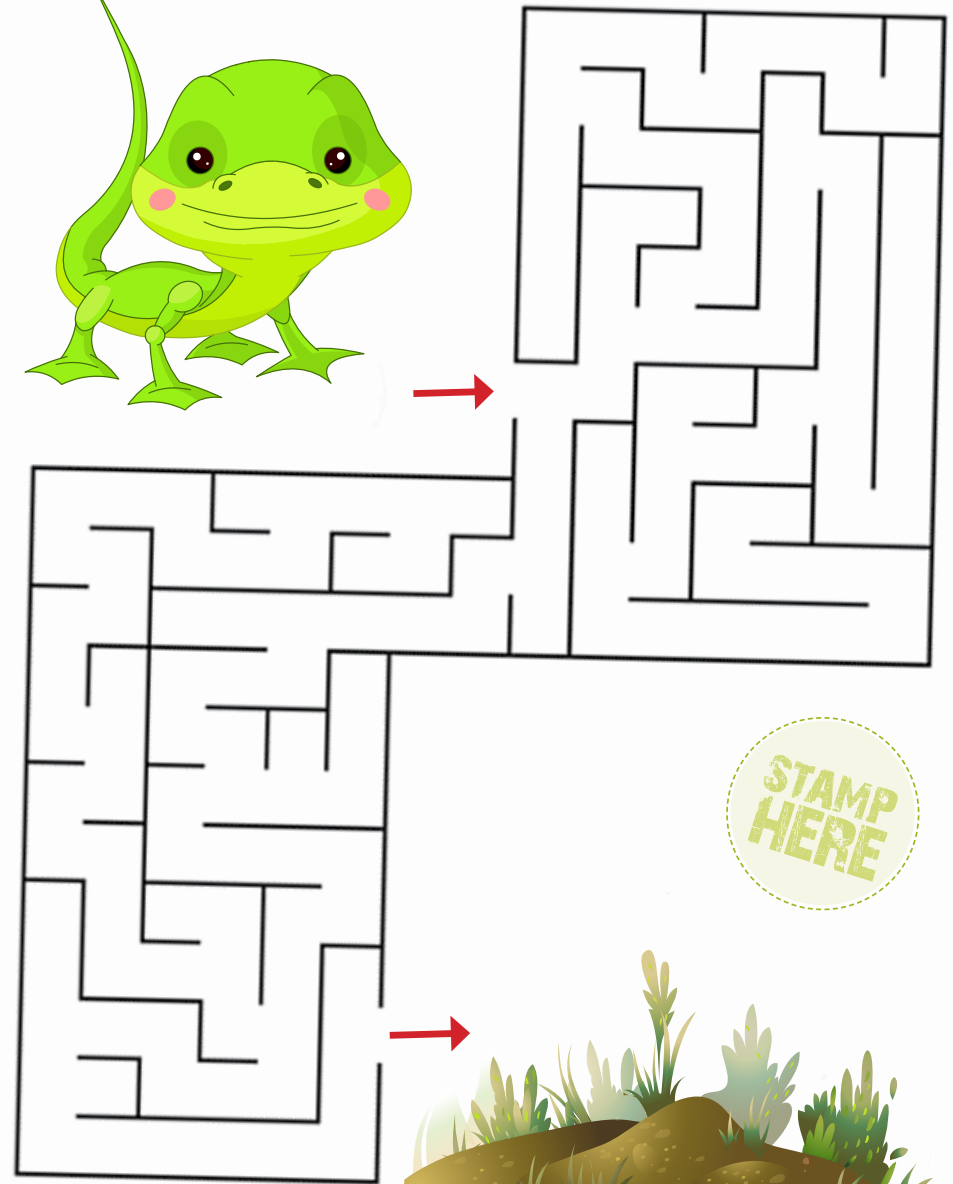
What can you do to help look after this special place and other endangered plants and animals?

- ✓ Tell others why it's special
- ✓ Put rubbish in the bin and recycle
- ✓ Plant some Banksias
- ✓ Join a Bushcare group
- ✓ Make a bird or microbat box

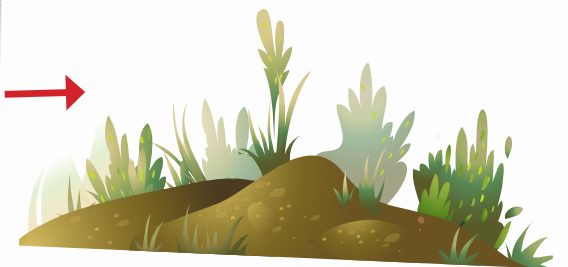
What has the school been doing to help look after our special place?

- ✓ Bush regenerators help remove weeds
- ✓ Installed a fence to protect the bush
- ✓ Invited visitors to learn about this place
- ✓ Cleaned up litter and rubbish

FIND LIZZY HER HOME







STAMP
HERE



OBSERVATIONS

Name _____

Date _____

Weather: ☐ cloudy  ☐ sunny  ☐ windy  ☐ rainy 

What's on the ground? ☐ Sand ☐ soil ☐ gravel ☐ concrete ☐ plants

Describe any interesting features of our special place

Draw something you observed in our special place.

ABORIGINAL PEOPLE AND SPECIAL PLACES

Sydney dreaming Stories honour the past, celebrate the present and secure the future 'spirit of place'.

What is the name of the Traditional Owners at Banksmeadow?



Wattun Goori: The story of the Hairy Men and how the Banksias came to be.
Adapted from <https://dharawalstories.com/stories/>



EcoHort
www.bushregenerators.com